

Keyfix[®]

NCCTL
Non-combustible
Cavity Tray Lintel
Installation Guide

keyfix.com

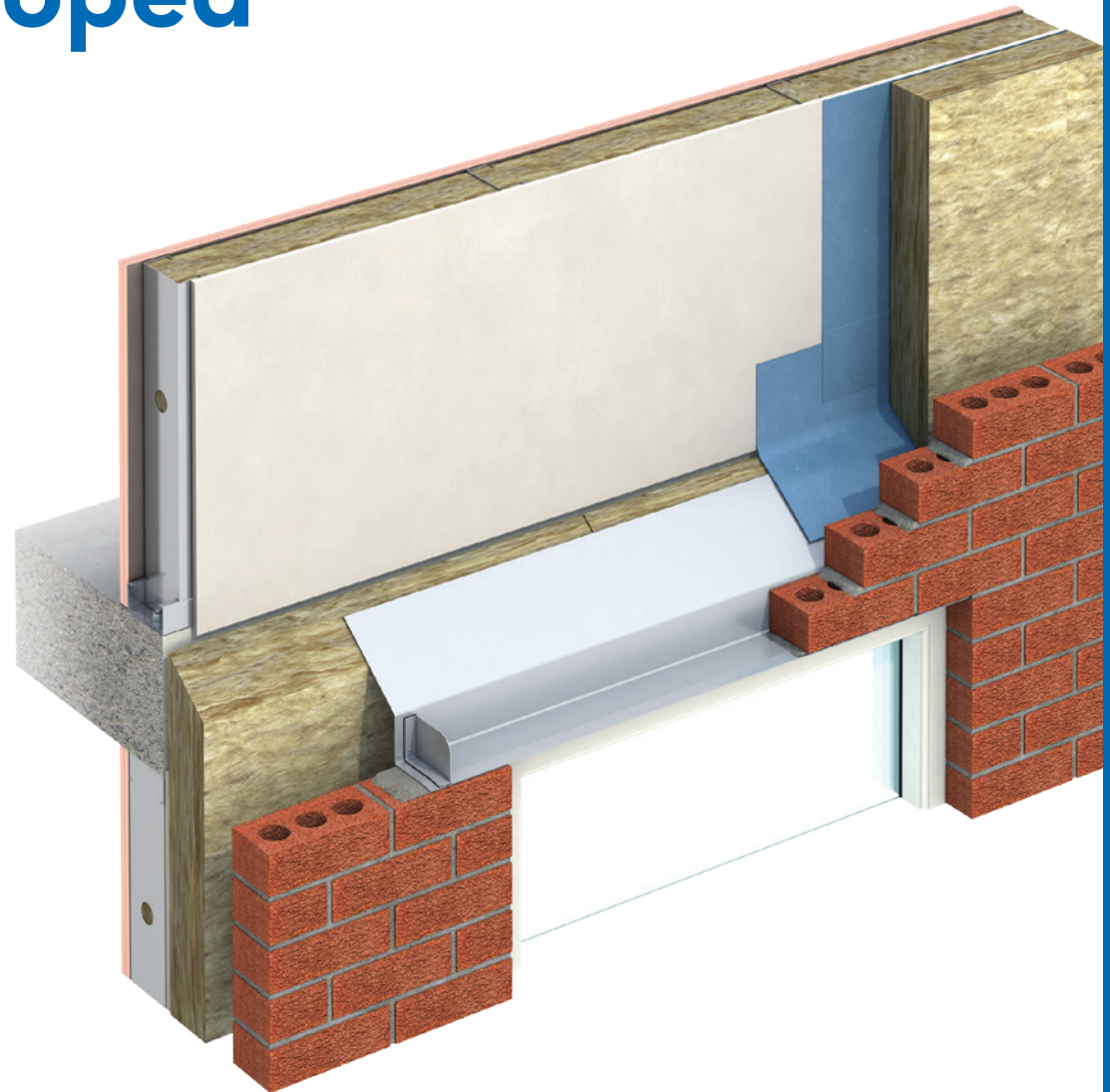
never sleeps

Innovation

Keyfix has developed a solution

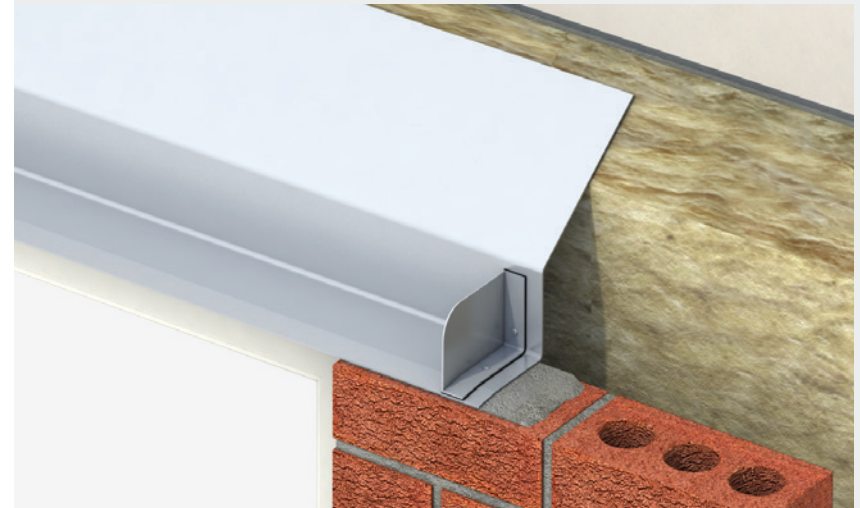
In buildings over 18m in height, Document B prevents the use of plastic DPCs. Galvanised lintels cannot be used without a DPC, as the DPC protects the galvanised surface against attack from chemicals present within mortars etc.

The Keyfix Non-combustible Cavity Tray Lintel offers a non-combustible stainless steel single leaf lintel with combined Cavity Tray. For use in an exterior masonry skin in conjunction with a non-masonry inner leaf such as a steel frame system, the NCCTL is a highly efficient and practical solution to the challenge of non-combustible cavity detailing.



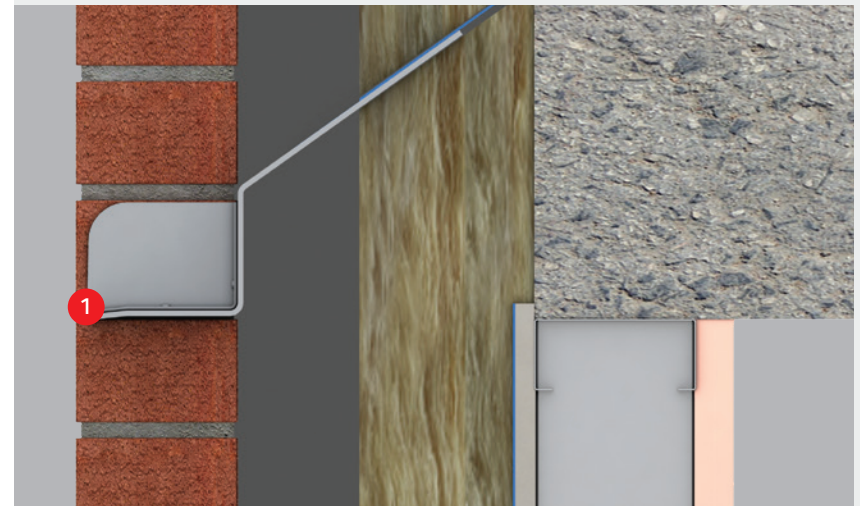
Minimum 150mm End Bearing

Lintels should be installed with a minimum end bearing of 150mm taking into account the positioning of the lintel's Stop Ends. The lintel should be bedded in mortar and levelled along its length and across its width.



Minimum 150mm End Bearing

The masonry above the lintel should be built in accordance with BS EN 1996-2-2006. Masonry must not overhang the lintel flange by more than 25mm.



1 Maximum overhang 25mm

WARNING! Potential Sharp Edges - Gloves Must Be Worn

Temporary Propping

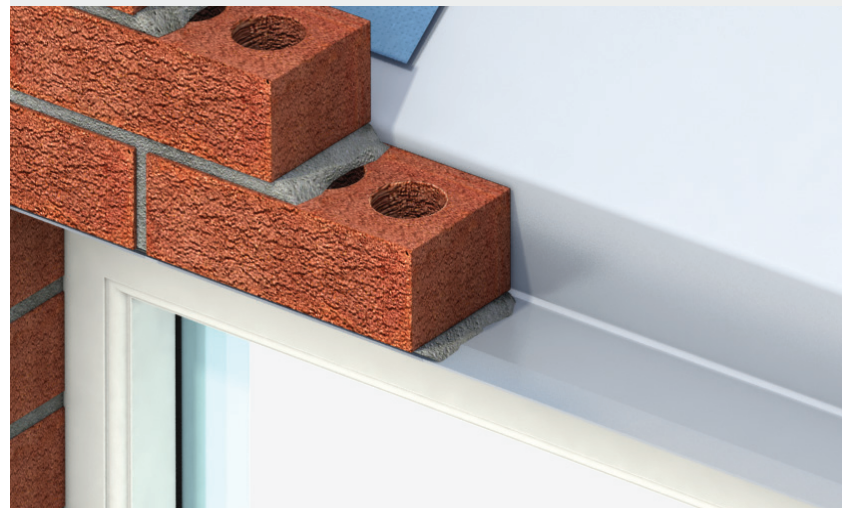
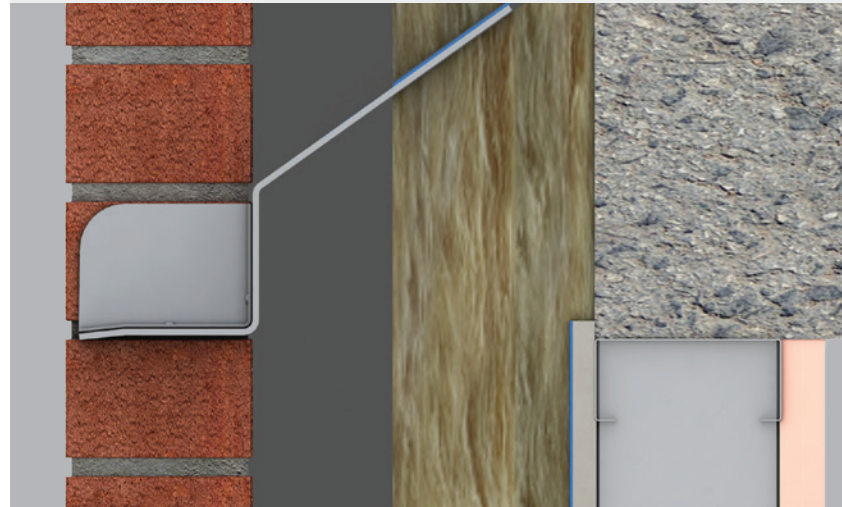
Temporary propping beneath the lintel can be used to facilitate speed of construction.

External Lintel Flange

The external lintel flange must project beyond the window / door frame.

CAUTION

Do not cut lintels to length or modify them in any way without consulting a Keyfix engineer.





Keyfix Limited NI

Ballyreagh Industrial Estate
Sandholes Road
Cookstown
BT80 9DG

Keyfix Limited GB

Ryder Close
Cadley Hill Industrial Estate
Swadlincote
DE11 9EU

T +44 (0)28 8676 7508
E info@keyfix.com