

# Non-combustible Stainless Steel Weep

The Keyfix Non-combustible Stainless Steel Weep (NCW) range is a Document B compliant component. Manufactured entirely from Class A1 Non-combustible Grade 304 Stainless Steel.

### Non-combustible Stainless Steel Weep

The Keyfix Non-combustible Stainless Steel Weep (NCW) range is a Document B compliant component. Manufactured entirely from Class A1 Non-combustible Grade 304 Stainless Steel.

### Classified A1 Fire Rated

Manufactured entirely from Class A1 non-combustible stainless steel, providing no contribution to fire or significant release of smoke, droplets or other particles.

### High Performance Stainless Steel

Manufactured using high quality 0.5mm thick Grade 304 stainless steel, assuring longevity in service (125 year+). For use in coastal locations please specify Grade 316 austenitic stainless steel to ensure compliance with relevant British Standards and Warranty provider requirements.

### Onsite Simplicity

The Keyfix Non-combustible Weep is manufactured entirely from Class A1 Non-combustible Grade 304 Stainless Steel. Its unique design compliments the Keyfix NCCT system, but can equally be installed over any stainless steel component, such as Lintels or Masonry Support. Unlike weeps manufactured from other metals, the Keyfix NCW will not suffer from electrolytic corrosion associated with the use of dissimilar metals in a wet environment.

### Variable Widths Available

NCW is available to suit masonry widths of 100-225mm as standard.

### Product Range

Specify

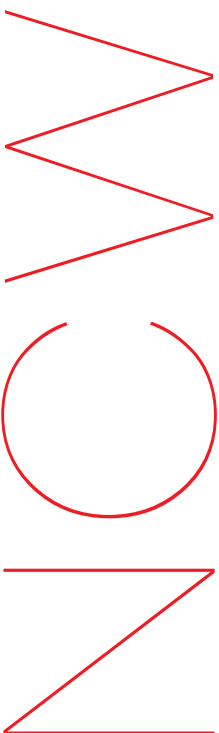
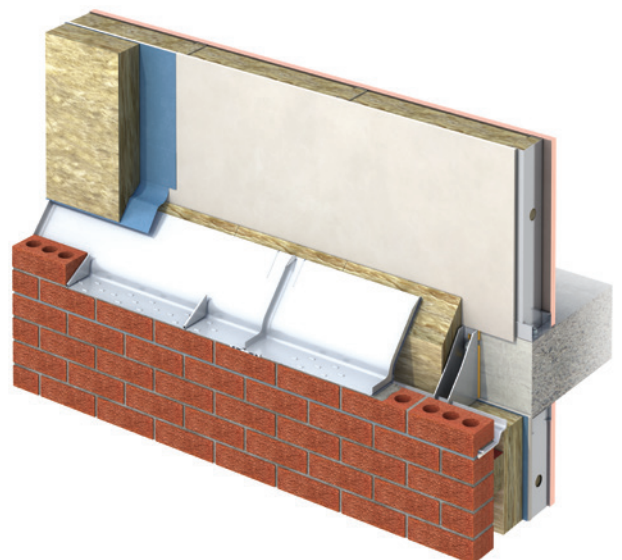
**NCW**

For use in 102.5mm wide masonry skins

Specify

**NCW215**

For use in 215mm wide masonry etc



# Specification

## Typical Specification Clauses

NCW - Keyfix Non-combustible Weep NCW

Use this clause to specify for use in 102.5mm masonry.

NCW- Keyfix Non-combustible Weep NCW215

Use this clause to specify for use in 215mm masonry.

## NON-COMBUSTIBLE STAINLESS STEEL WEEP

### Application

Place half bed of mortar on top of trays and commence brickwork. Weeps are to be placed either on top of a half bed of mortar or directly on top of Keyfix Non-combustible Cavity Tray system. Please ensure that Weeps are kept clear of mortar to allow for adequate drainage.

Weeps should be installed within 450mm from inside of Brick Tray's Stop Ends and thereafter at 450mm centres. Ensure perp joint is filled on top of weep.

### Corners

Keyfix Non-combustible Stainless Steel Weeps should be placed on Corner Units within 225mm of the overlapping tray's Stop End. Two weeps should be placed on each corner unit to provide sufficient drainage. Only Stainless Steel weeps can be used directly on top of Stainless Steel trays to avoid bi-metallic / electrolytic corrosion between dissimilar materials and provide optimum drainage to the system.

### Manufacturer

Keyfix Limited NI  
Ballyreagh Industrial Estate  
Sandholes Road,  
Cookstown  
BT80 9DG

Keyfix Limited GB  
Ryder Close  
Cadley Hill Industrial Estate  
Swadlincote DE11 9EY

T +44 (02)8 8767 7508  
info@keyfix.com

